

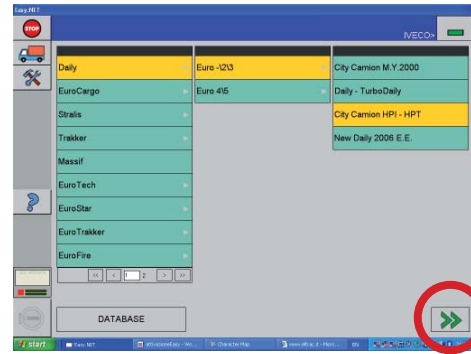
engine test

1. to start an Engine Test

2. Engine Test environment

3. help key in the Engine Test environment

To start an Engine Test

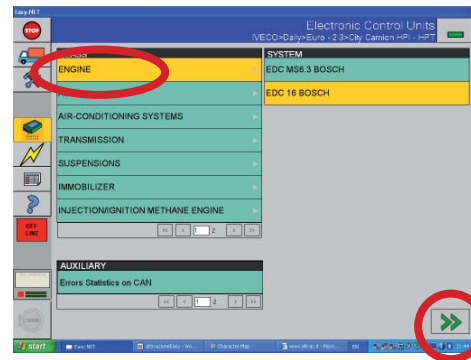


1. select the Group, the Category, and the Model under test to which the vehicle belongs
2. press the **NAVIGATION** button **FORWARD** (enabled - green) to continue

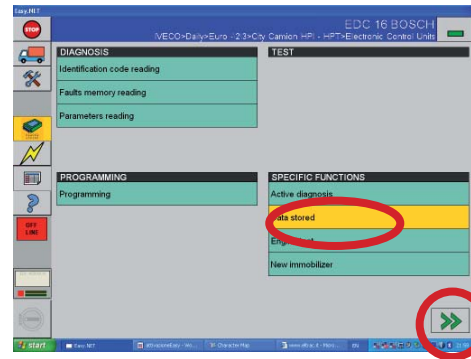
If the Guide to Diagnosis is available (GAD), the user should consult it by automatically accessing the GAD environment (see unit 10).

*To continue the work on an electronic system, select the key **ECU'S AREA>ADD ECU**. Now it is possible to select the Class and the Electronic System; confirm by selecting the **RIGHT ARROW** key.*

*If the GAD is not available, select immediately the Class and the Electronic System; confirm by selecting the **RIGHT ARROW** key.*



3. select the Class and the System under test to which the vehicle belongs; select the **FORWARD NAVIGATION** key (enabled - green) to continue



4. select the ENGINE TEST option from the Specific Functions list; select the **FORWARD NAVIGATION** key (it is active, in green displayed)
5. you access the **Engine Test** environment where the list of available tests is displayed



It is possible to carry out an engine test only in **online** mode. In case of error check the ECU/ECI/E.A.S.Y. connections.

engine test

1. to start an Engine Test

2. Engine Test environment

2.1 Engine Test

2.2 stored results

2.3 read parameters

3. help key in the Engine Test environment

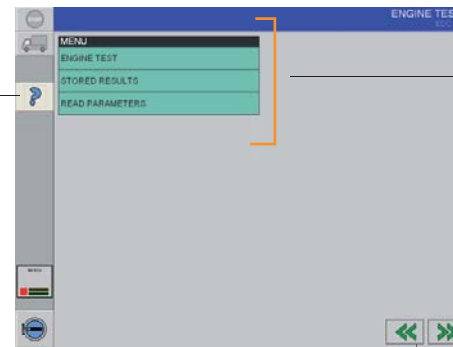
Engine Test environment

It is possible to carry out a test of a specific function, to read the set parameters values or to consult the tests results of previous tests.

The options are displayed in a selectable List:

- [ENGINE TEST](#): select to carry out the test; the electronic system under test determines the components type on which the test can be carried out.
- [STORED RESULTS](#): select to analyse the results of previous tests which have been saved in a file
- [READ PARAMETERS](#): select to carry out the test of set parameters.

HELP key
if selected, it provides information about the tests



available options:

- engine test
- stored results
- read parameters

FORWARD NAVIGATION key

The **BACK NAVIGATION key** allows you to move one step back; if selected at this level it allows you to exit the *Engine Test* environment.

engine test

1. to start an Engine Test

2. Engine Test environment

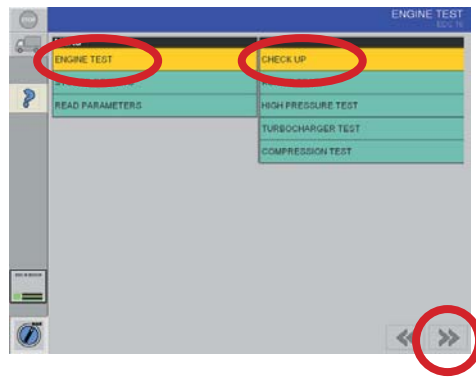
2.1 Engine Test

2.2 stored results

2.3 read parameters

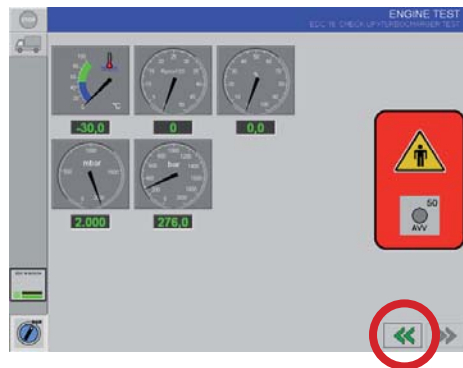
3. help key in the Engine Test environment

Engine Test



1. select the **ENGINE TEST** option
2. select the test you want to carry out or the **CHECK UP** option
3. press the **FORWARD NAVIGATION** key (enabled, shown in green)

- the system displays information about the activities in progress
- the ignition key ON is automatically activated
- the ECU connection starts



4. read the displayed messages and select the **TICK** icon to continue; the on-screen displayed instructions help during the test execution

At the end the system displays the results.
 Select the **BACK NAVIGATION** key to choose another test.

engine test

1. to start an Engine Test

2. Engine Test environment

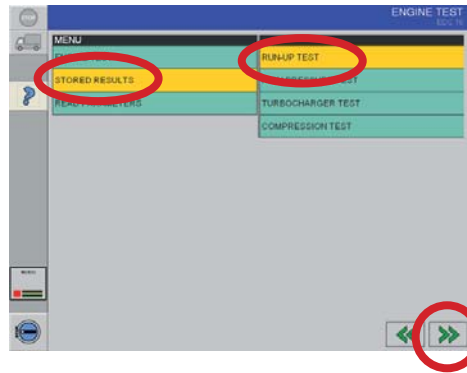
2.1 Engine Test

2.2 stored results

2.3 read parameters

3. help key in the Engine Test environment

Stored results

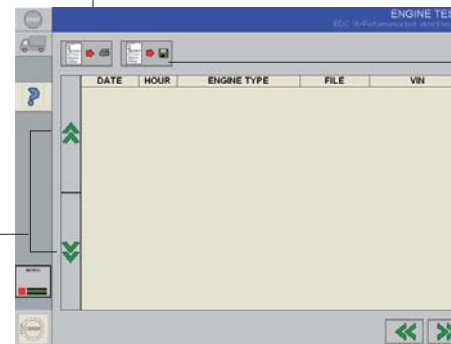


1. select the **STORED RESULTS** option
2. select the test for which you want to analyse the saved data of a previous test
3. press the **FORWARD NAVIGATION** key (enabled, shown in green)

The requested data are showed in the [Stored Data](#) window.

PRINT key
it prints the displayed data

UP/DOWN key
to scroll up and down
long lists which cannot
be contained in a single
window



SAVE key
saves on file the displayed data

engine test

1. to start an Engine Test

2. Engine Test environment

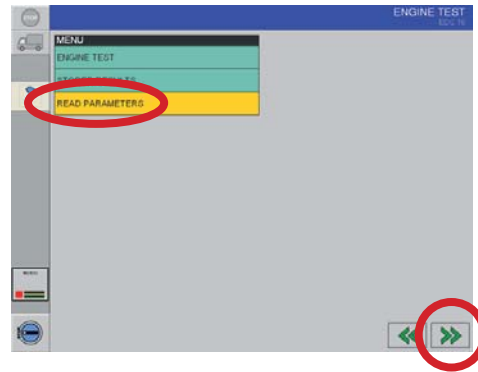
2.1 Engine Test

2.2 stored results

2.3 read parameters

3. help key in the Engine Test environment

Read parameters



1. select the **READ PARAMETERS** option to carry out an interactive test of set parameters
2. press the **FORWARD NAVIGATION** key (enabled, shown in green)

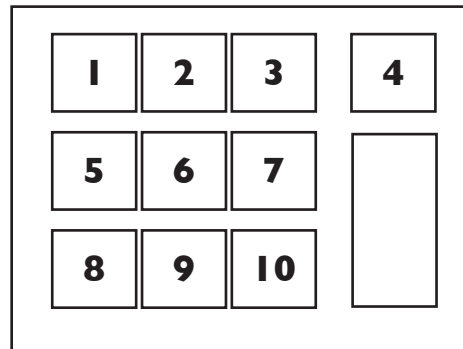
- the system displays information about the activities in progress
- the ECU connection starts



3. after the connections with the ECU the parameters acquisition starts

EMERGENCY button

in case of emergency press it to stop the engine and interrupt every activity



Parameter under acquisition

1	coolant temperature
2	fuel temperature
3	injected fuel
4	Engine rpm
5	battery voltage
6	accelerator pedal position
7	advance injection
8	rail pressure
9	Vehicle speed
10	boost pressure

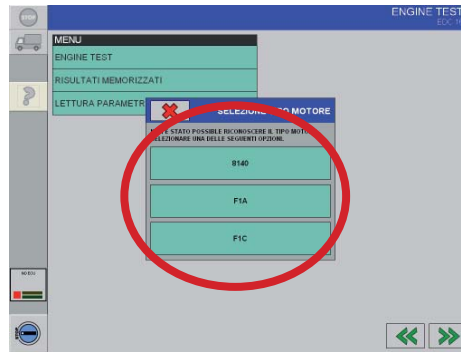
engine test

1. to start an Engine Test

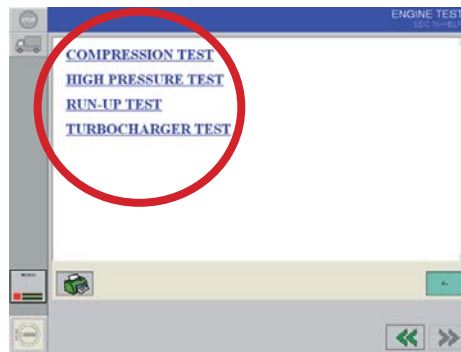
2. Engine Test environment

3. help key in the Engine Test environment

The HELP key in the Engine Test environment



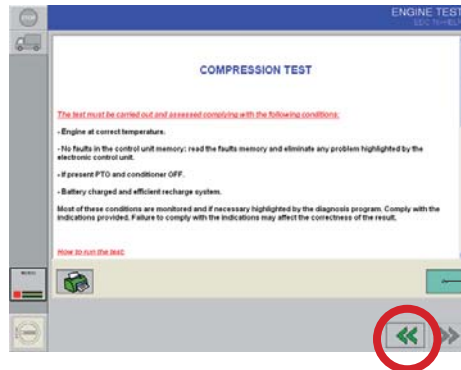
1. select the **HELP** key
2. if necessary, the system requires to select the used engine type
3. select the engine type; you access the help



4. select the test type for which you want to read the help

For each test some information is given about

- how to carry out the test
- the results estimate
- the intervention to be carried out when a value exceeds the normal range



5. select the **BACK NAVIGATION** key to exit the help

BACK key
select to consult another help